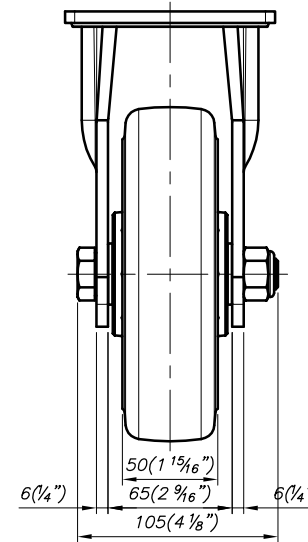
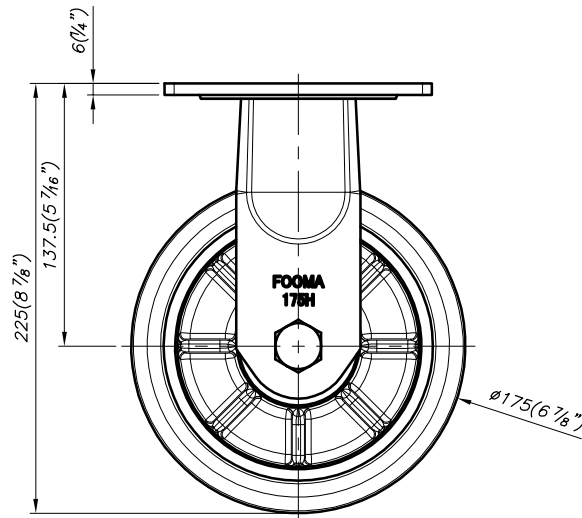
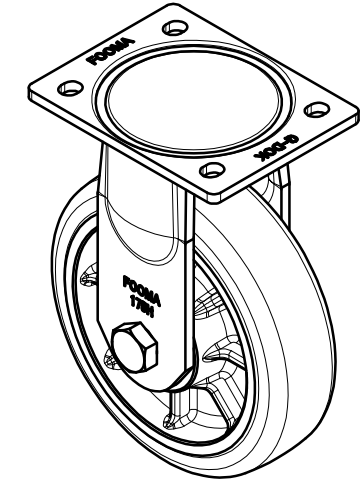
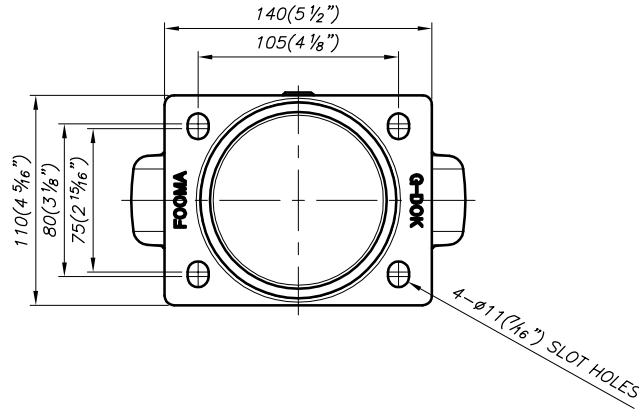


REV. NO.	DATE	DESCRIPTION	APP'D	REMARKS
1	-	-	-	-

0



NOTE

- ±1) LOAD CAPACITY : 800KG/EA
- ±2) SURFACE TREATMENT : POWDER COATED & ZINC GALVANIZED

PROCESS		GENERAL TOLERANCE																		
MATERIAL		MACHINING WORKING				DE CASTING				ELECTRON BEAM WELDING				PRESS WORKING						
APPROVED BY	CHECKED BY	DRAWN BY	PRODUCT GENERAL TOLERANCE																	
O.C.K	J.Y.H	J.T.H	CUTTER HEIGHT		WHEEL OUTER DIAMETER		WHEEL HUB WIDTH		PRESSURE		GENERAL		PRESSURE		GENERAL		PRESSURE		GENERAL	
			±0.05	±0.1	±0.15	±0.2	±0.3	±0.4	±0.5	±0.6	±0.7	±0.8	±0.9	±1.0	±1.1	±1.2	±1.3	±1.4	±1.5	±1.6

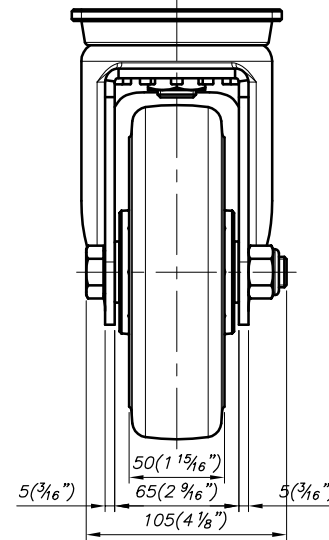
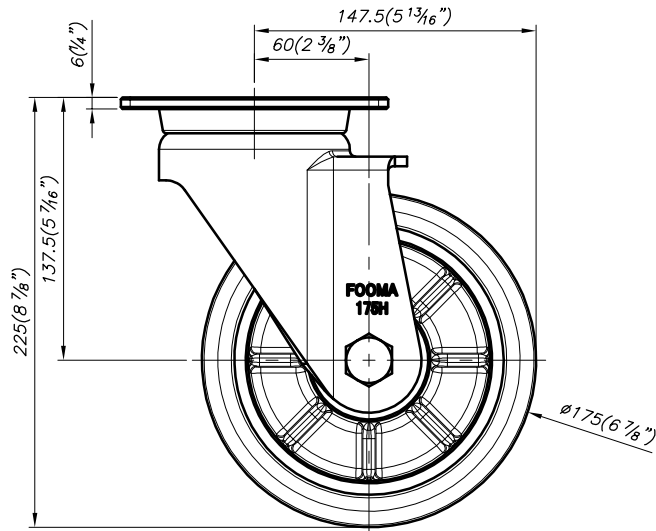
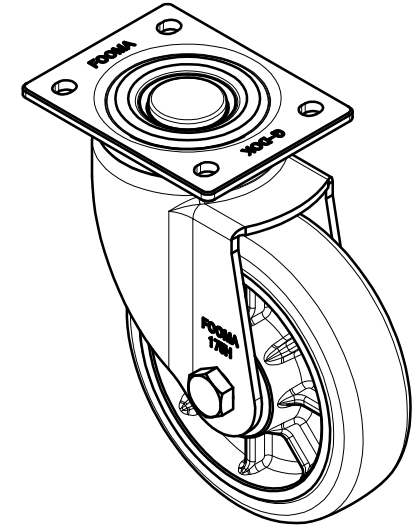
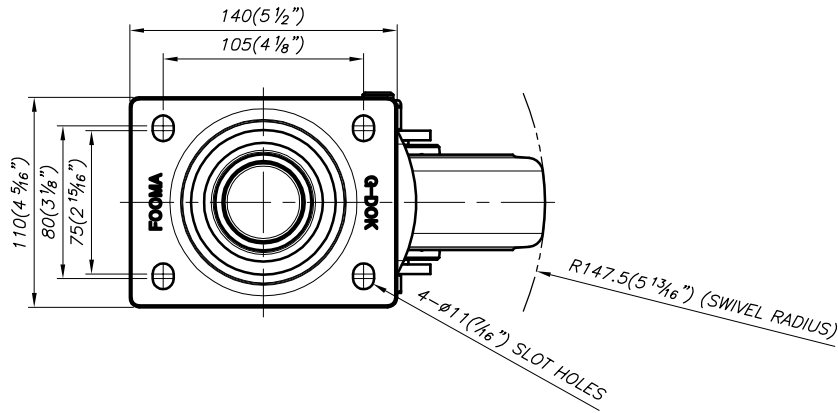
NO.	DESCRIPTION	UNIT	Q'TY	MATERIAL	WEIGHT	SPECIFICATION	REMARKS
---	---	---	---	---	---	---	---

FOOT MASTER®		FOOMA®		G-DOK IND.	
SERIES NAME	GHP-SERIES	DATE	2024.04.26	GSN NO.	5E221-211111
PRODUCT NAME	GHP-175-ARF-MUD-PEU	SCALE	1/3	DWG. NO.	5E221-211111
PART NAME	ASSEMBLY	WEIGHT	---	REVISION	SIZE A3
		GENERAL TOLERANCE	B	ANGLE	⊕ ⊖

FOOT MASTER G-DOK IND. FOOT MASTER G-DOK IND.

REV. NO.	DATE	DESCRIPTION	APP'D	REMARKS
1	-	-	-	-

0



NOTE

- 1) LOAD CAPACITY : 800KG/EA
- 2) SURFACE TREATMENT : POWDER COATED & ZINC GALVANIZED

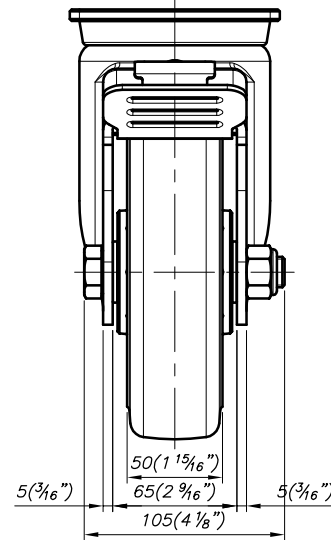
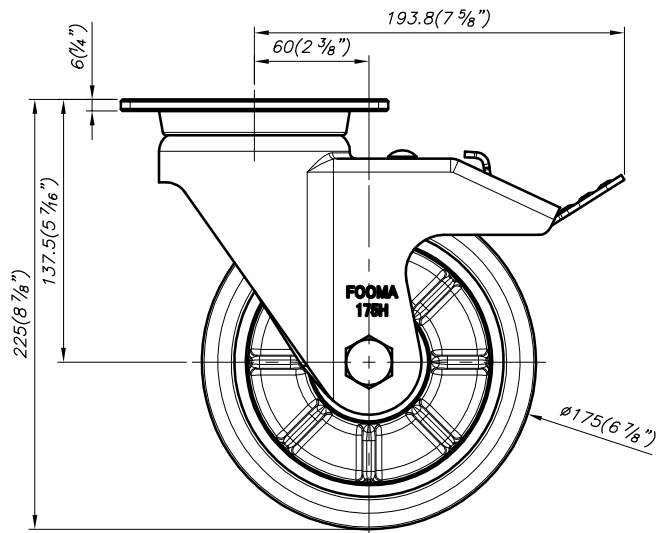
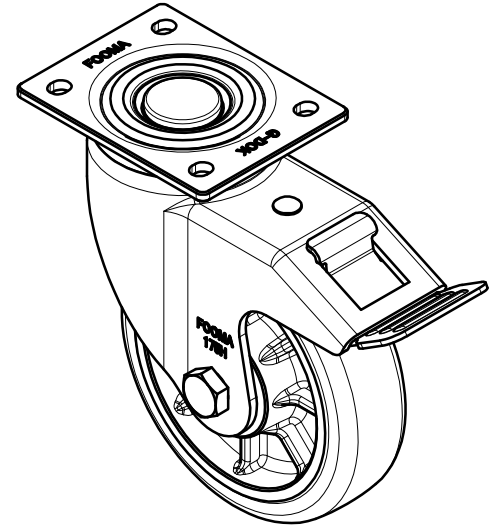
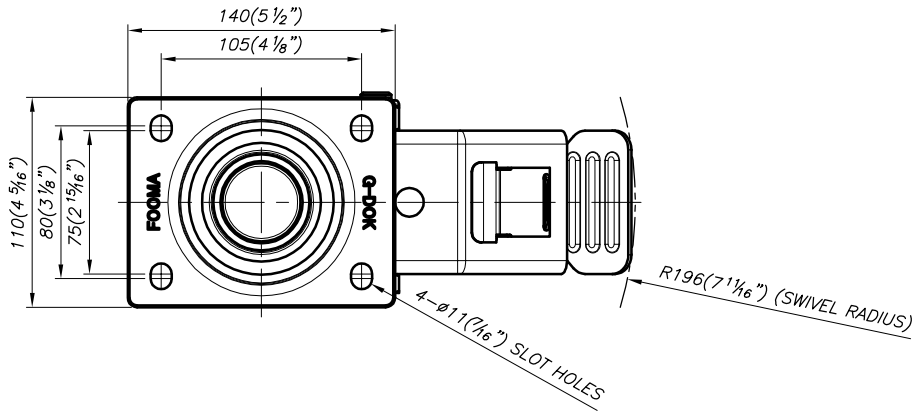
PROCESS		GENERAL TOLERANCE									
MATERIAL		MACHINING FINISH		DE CASTING		ELECTRON BEAM		PRESS BURNING		UNIT	
APPROVED BY	CHECKED BY	DRAWN BY	FINISH	PRECISION	GENERAL	FINISH	PRECISION	GENERAL	FINISH	PRECISION	GENERAL
O.C.K	J.Y.H	J.T.H	0.5-6	±0.05	±0.1	1-8	±0.05	±0.1	1-8	±0.05	±0.1
			6-30	±0.1	±0.2	3-8	±0.05	±0.1	3-8	±0.05	±0.1
			30-120	±0.15	±0.3	8-10	±0.05	±0.1	8-10	±0.05	±0.1
			120-400	±0.2	±0.5	10-15	±0.05	±0.1	10-15	±0.05	±0.1
			400-1000	±0.3	±0.8	15-20	±0.05	±0.1	15-20	±0.05	±0.1

FOOT MASTER®		FOOMA®		G-DOK IND.	
SERIES NAME	GHP-SERIES	DATE	2024.04.26	GSN NO.	5E211-211111
PRODUCT NAME	GHP-175-ASF-MUD-PEU	SCALE	1/3	DWG. NO.	5E211-211111
PART NAME	ASSEMBLY	WEIGHT	--	REVISION	SIZE A3
		GENERAL TOLERANCE	B	ANGLE	⚠

FOOT MASTER G-DOK IND.

REV. NO.	DATE	DESCRIPTION	APP'D	REMARKS
1	-	-	-	-

0



NOTE

- ±1) LOAD CAPACITY : 800KG/EA
- ±2) SURFACE TREATMENT : POWDER COATED & ZINC GALVANIZED

PROCESS		GENERAL TOLERANCE																
MATERIAL		MACHINING WORKING				DE CASTING				ELECTRON BEAMING				PRESS WORKING				
APPROVED BY	CHECKED BY	DRAWN BY	PRODUCT GENERAL TOLERANCE															
O.C.K	J.Y.H	J.T.H	CAXTER HEIGHT		WHEEL OUTER DIAMETER		WHEEL HUB WIDTH		WHEEL RIM WIDTH		WHEEL RIM DIAMETER		WHEEL RIM THICKNESS		WHEEL RIM TAPER		WHEEL RIM BEVEL	
			0.05	0.1	0.1	0.1	0.1	0.1	0.1	0.1	0.1	0.1	0.1	0.1	0.1	0.1	0.1	0.1
			±0.05 (MELT)		±0.1 (MELT)		±0.1 (MELT)		±0.1 (MELT)		±0.1 (MELT)		±0.1 (MELT)		±0.1 (MELT)		±0.1 (MELT)	
			120 - 400	±0.2	±0.5	±0.1	±0.1	±0.1	±0.1	±0.1	±0.1	±0.1	±0.1	±0.1	±0.1	±0.1	±0.1	±0.1
			400 - 1000	±0.3	±0.8	±0.1	±0.1	±0.1	±0.1	±0.1	±0.1	±0.1	±0.1	±0.1	±0.1	±0.1	±0.1	±0.1

FOOT MASTER®		FOOMA®		G-DOK IND.	
SERIES NAME	GHP-SERIES	DATE	2024.04.26	GSN NO.	5E231-211111
PRODUCT NAME	GHP-175-BSF-MUD-PEU	SCALE	1/3	DWG. NO.	5E231-211111
PART NAME	ASSEMBLY	WEIGHT	--	REVISION	SIZE A3
		GENERAL TOLERANCE	B	ANGLE	⚠

FOOT MASTER G-DOK IND.