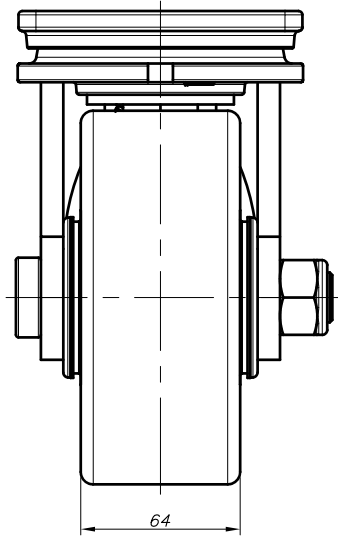
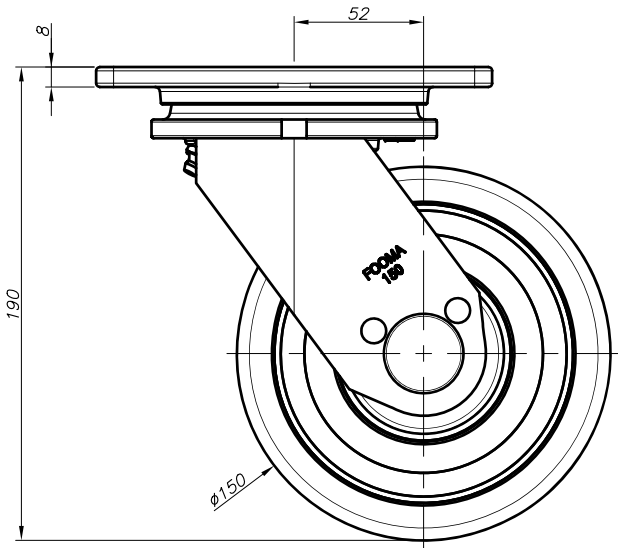
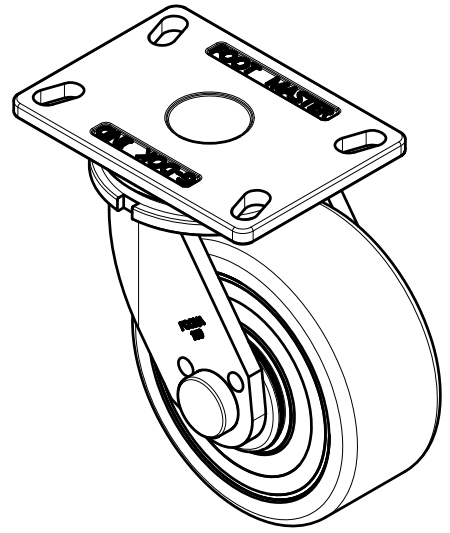
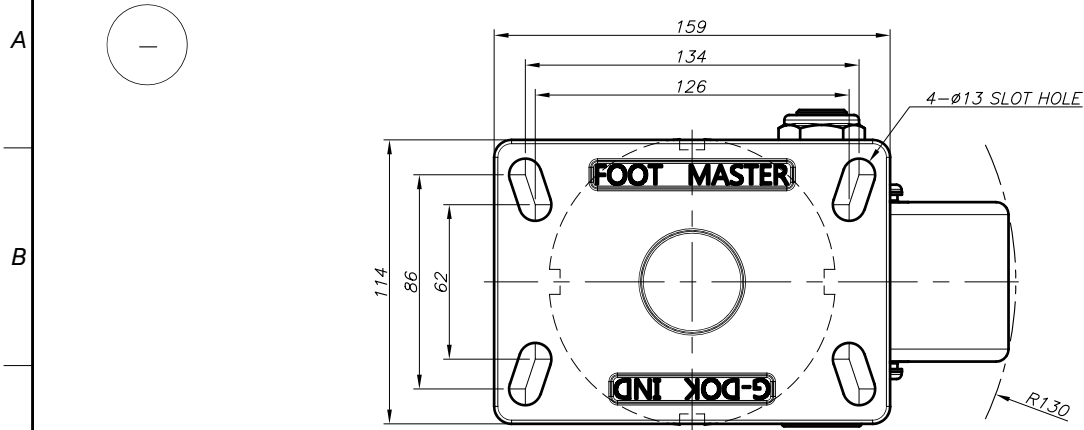


REV. NO.	DATE	DESCRIPTION	APP'D	REMARKS
▲	-	-	-	-



NOTE

※ 1) --

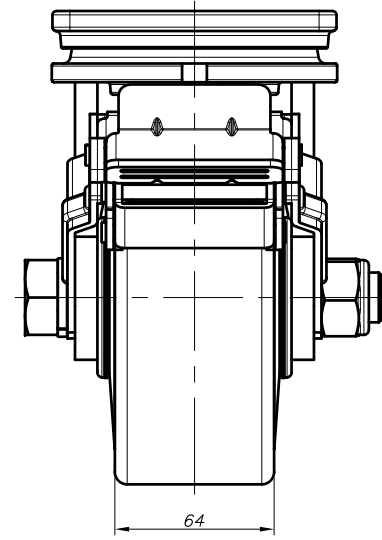
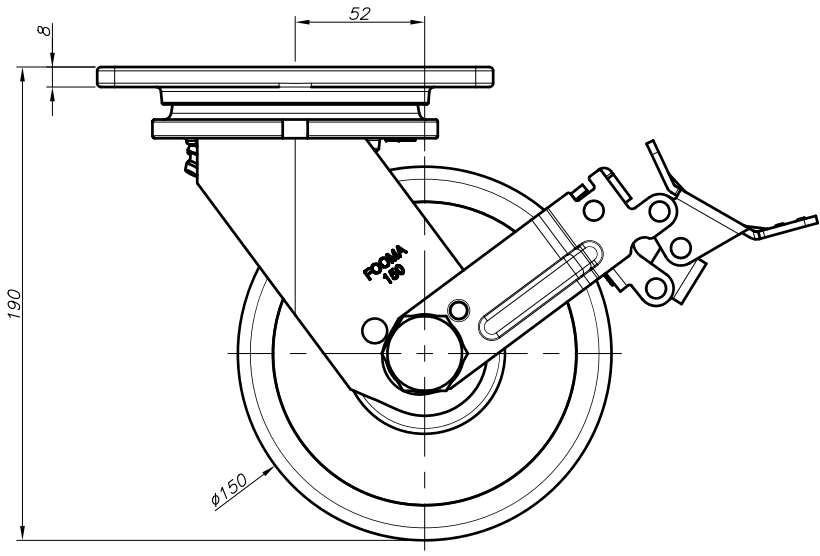
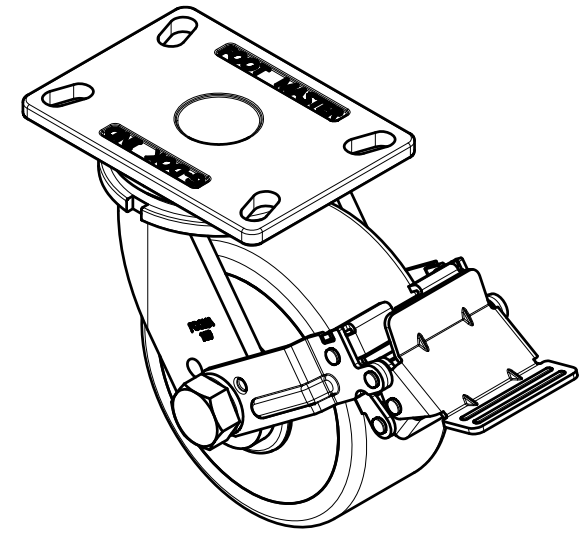
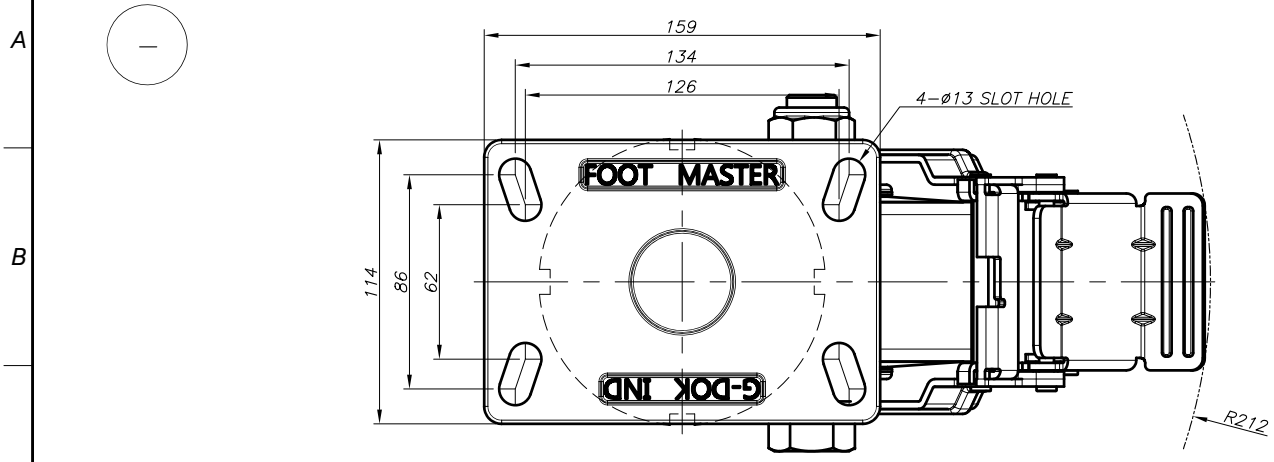
NO.	DESCRIPTION	UNIT	Q'TY	MATERIAL	WEIGHT	SPECIFICATION	REMARKS
--	--	--	--	--	--	--	--

PROCESS		MATERIAL		APPROVED BY		CHECKED BY		DRAWN BY		GENERAL TOLERANCE		CHAMFER		D.S.		ROAD		D.S.		UNIT		mm							
---		---		O.C.K		J.Y.H		S.D.W		PRODUCT GENERAL TOLERANCE CENTER HEIGHT: ±0.05 (0.005mm) INWELL OUTER DIAMETER: ±0.05 (0.005mm) INWELL INNER DIAMETER: ±0.05 (0.005mm) INWELL RADIUS: ±0.05 (0.005mm) INWELL LENGTH: ±0.05 (0.005mm) INWELL POSITION: ±0.05 (0.005mm) INWELL ANGLE: ±0.05 (0.005mm) INWELL SURFACE: ±0.05 (0.005mm) INWELL FINISH: ±0.05 (0.005mm) INWELL TOLERANCE: ±0.05 (0.005mm) INWELL POSITION: ±0.05 (0.005mm) INWELL ANGLE: ±0.05 (0.005mm) INWELL SURFACE: ±0.05 (0.005mm) INWELL FINISH: ±0.05 (0.005mm) INWELL TOLERANCE: ±0.05 (0.005mm)		0.5-6		0.5-6		0.5-6		0.5-6		0.5-6		0.5-6		0.5-6		0.5-6		0.5-6	

FOOT MASTER®		FOOMA®		G-DOK IND.	
SERIES NAME	GF-SERIES	DATE	2023.08.21	GSN NO.	-
PRODUCT NAME	GF-150-ASF-MCD	SCALE	N/S	DWG. NO.	-
PART NAME	ASSEMBLY	WEIGHT	--	REVISION	-
		GENERAL TOLERANCE	--	ANGLE	▲

FOOT MASTER G-DOK IND.

REV. NO.	DATE	DESCRIPTION	APP'D	REMARKS
▲	-	-	-	-



NOTE

※1) --

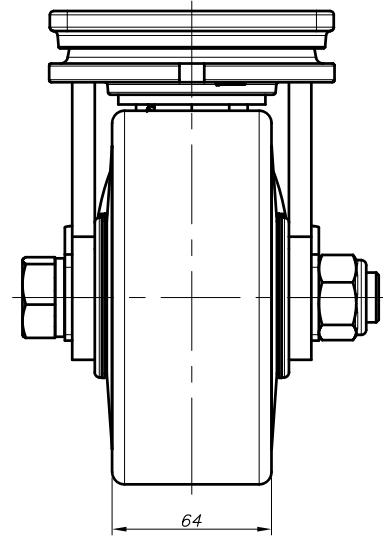
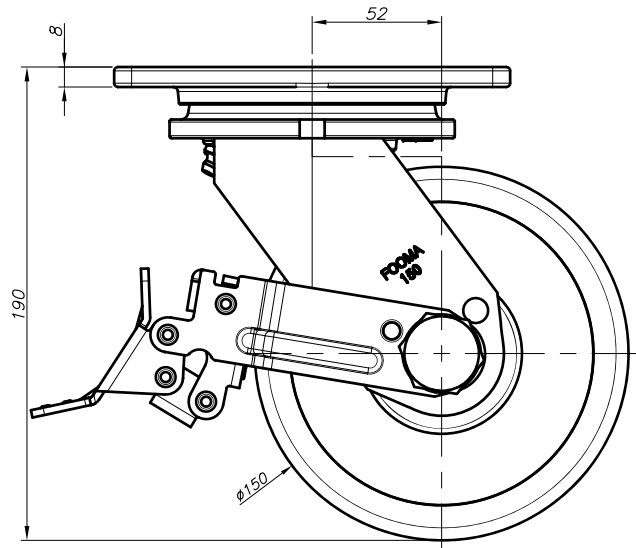
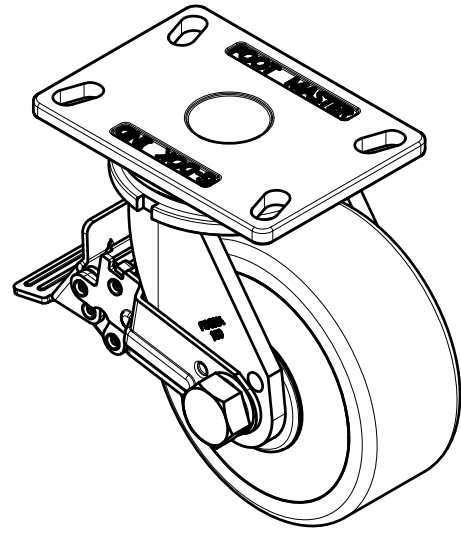
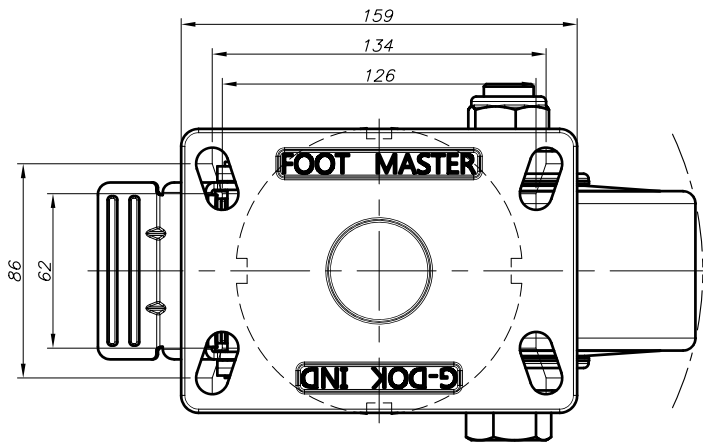
NO.	DESCRIPTION	UNIT	Q'TY	MATERIAL	WEIGHT	SPECIFICATION	REMARKS
--	--	--	--	--	--	--	--

PROCESS			GENERAL TOLERANCE															
MATERIAL			MACHINING WORKING				DIE CASTING				INJECTION MOLDING				PRESS WORKING			
APPROVED BY	CHECKED BY	DRAWN BY	FINISH	PRECISION (μ)	GENERAL (μ)	FINISH	PRECISION (μ)	GENERAL (μ)	FINISH	PRECISION (μ)	GENERAL (μ)	FINISH	PRECISION (μ)	GENERAL (μ)	FINISH	PRECISION (μ)	GENERAL (μ)	
O.C.K	J.Y.H	S.D.W	0.5-6	±0.05	±0.1	3-8	±0.1	±0.2	3-8	±0.1	±0.2	3-8	±0.1	±0.2	3-8	±0.1	±0.2	
			6-30	±0.1	±0.2	3-8	±0.1	±0.2	3-8	±0.1	±0.2	3-8	±0.1	±0.2	3-8	±0.1	±0.2	
			30-120	±0.15	±0.3	3-8	±0.1	±0.2	3-8	±0.1	±0.2	3-8	±0.1	±0.2	3-8	±0.1	±0.2	
			120-400	±0.2	±0.5	3-8	±0.1	±0.2	3-8	±0.1	±0.2	3-8	±0.1	±0.2	3-8	±0.1	±0.2	
			400-1000	±0.3	±0.8	3-8	±0.1	±0.2	3-8	±0.1	±0.2	3-8	±0.1	±0.2	3-8	±0.1	±0.2	

FOOT MASTER®		FOOMA®		G-DOK IND.	
SERIES NAME	GF-SERIES	DATE	2023.08.21	GSN NO.	-
PRODUCT NAME	GF-150-BSF-MCD	SCALE	N/S	DWG. NO.	-
PART NAME	ASSEMBLY	WEIGHT	--	REVISION	SIZE A3
		GENERAL TOLERANCE	--	ANGLE	⊕ ⊖

FOOT MASTER G-DOK IND.

REV. NO.	DATE	DESCRIPTION	APP'D	REMARKS
▲	-	-	-	-



NOTE

※ 1) --

NO.	DESCRIPTION	UNIT	Q'TY	MATERIAL	WEIGHT	SPECIFICATION	REMARKS
--	--	--	--	--	--	--	--

PROCESS		MATERIAL		APPROVED BY		CHECKED BY		DRAWN BY	
---		---		O.C.K		J.Y.H		S.D.W	

GENERAL TOLERANCE											
MACHINING WORKING			DIE CASTING			INJECTION MOLDING			PRESS WORKING		
MINUS	PRESION	GENERAL	MINUS	PRESION	GENERAL	MINUS	PRESION	GENERAL	MINUS	PRESION	GENERAL
0.5 - 6	±0.05	±0.1	0.5 - 6	±0.05	±0.1	0.5 - 6	±0.05	±0.1	0.5 - 6	±0.05	±0.1
6 - 30	±0.1	±0.2	30 - 120	±0.15	±0.3	120 - 400	±0.2	±0.5	400 - 1000	±0.3	±0.8

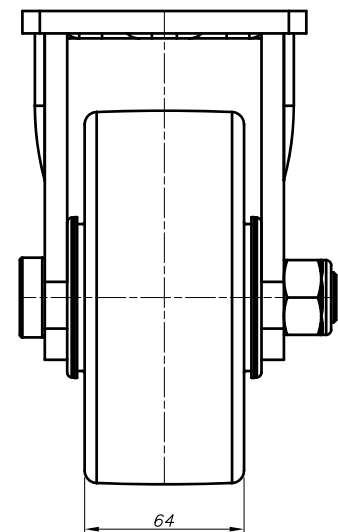
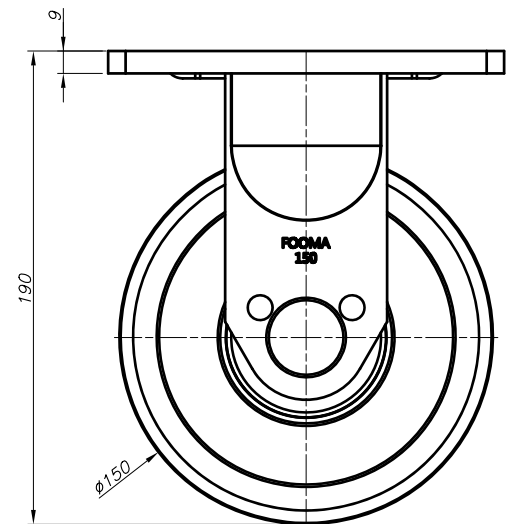
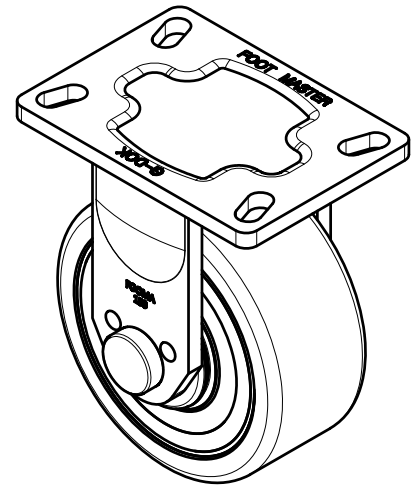
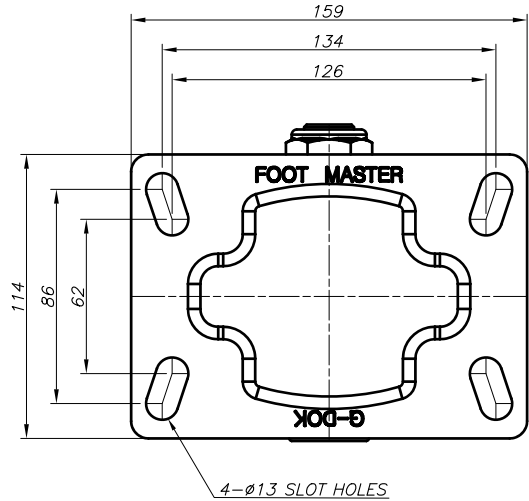
PRODUCT GENERAL TOLERANCE					
CASTER HEIGHT		WHEEL OUTER DIAMETER		WHEEL HUB WIDTH	
±0.5K	±1K	±0.5K	±1K	-1K	-2K
(MINUS)	(MINUS)	(MINUS)	(MINUS)	(MINUS)	(MINUS)

SERIES NAME		DATE		GSN NO.	
GF-SERIES		2023.08.21		-	
PRODUCT NAME		SCALE		DWG. NO.	
GF-150-BSF-MCD-FRN		N/S		-	
PART NAME		WEIGHT		REVISION	
ASSEMBLY		--		-	

FOOT MASTER®		FOOMA®		G-DOK IND.	
GENERAL TOLERANCE		--			

FOOT MASTER G-DOK IND. FOOT MASTER G-DOK IND.

REV. NO.	DATE	DESCRIPTION	APP'D	REMARKS
▲	-	-	-	-



NOTE
 ※1) --

PROCESS		MATERIAL		APPROVED BY		CHECKED BY		DRAWN BY	
---		---		O.C.K		J.Y.H		S.D.W	

GENERAL TOLERANCE									
MACHINING WORKING		DIE CASTING		INJECTION MOLDING		PRESS WORKING			
FINISH	PRECISION (μ)	GENERAL (μ)	FINISH	PRECISION (μ)	GENERAL (μ)	FINISH	PRECISION (μ)	GENERAL (μ)	FINISH
0.5 - 6	±0.05	±0.1	1-10	±0.1	±0.2	1-10	±0.1	±0.2	1-10
6 - 30	±0.1	±0.2	10-30	±0.1	±0.2	10-30	±0.1	±0.2	10-30
30 - 120	±0.15	±0.3	30-100	±0.2	±0.4	30-100	±0.2	±0.4	30-100
120 - 400	±0.2	±0.5	100-300	±0.3	±0.6	100-300	±0.3	±0.6	100-300
400 - 1000	±0.3	±0.8	300-1000	±0.4	±1.0	300-1000	±0.4	±1.0	300-1000

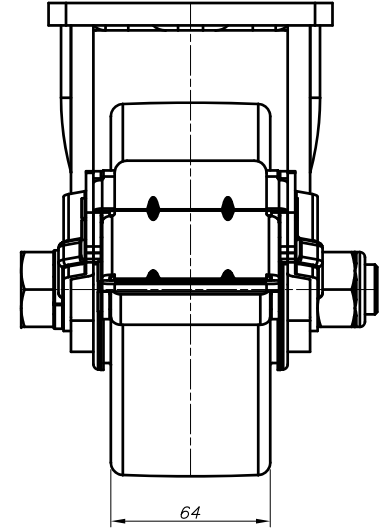
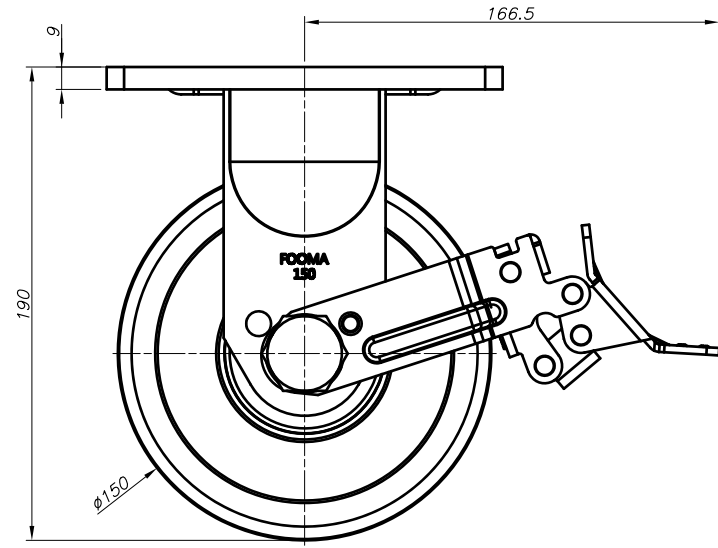
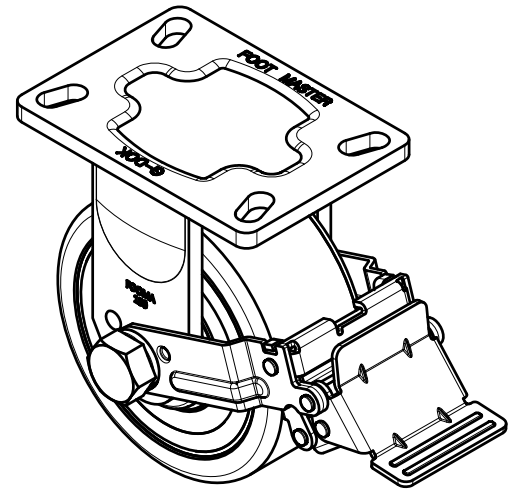
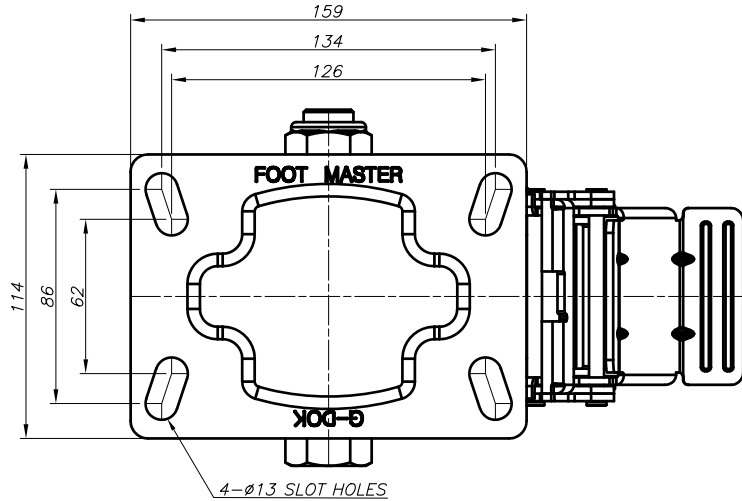
PRODUCT GENERAL TOLERANCE				
CASTER HEIGHT	WHEEL OUTER DIAMETER	WHEEL HUB WIDTH	FINISH	PRECISION
±0.05 (MIN±0.05)	±0.05 (MIN±0.05)	±0.05 (MIN±0.05)	±0.1	±0.2

NO.	DESCRIPTION	UNIT	Q'TY	MATERIAL	WEIGHT	SPECIFICATION	REMARKS
--	--	-	-	-	-	-	-

FOOT MASTER®		FOOMA®		G-DOK IND.	
SERIES NAME	GF-SERIES	DATE	2023.08.21	GSN NO.	-
PRODUCT NAME	GF-150-ARF-MCD	SCALE	N/S	DWG. NO.	-
PART NAME	ASSEMBLY	WEIGHT	--	REVISION	SIZE A3
GENERAL TOLERANCE		--		ANGLE	▲

FOOT MASTER G-DOK IND.

REV. NO.	DATE	DESCRIPTION	APP'D	REMARKS
▲	-	-	-	-



NOTE
 ※1) --

NO.	DESCRIPTION	UNIT	Q'TY	MATERIAL	WEIGHT	SPECIFICATION	REMARKS
--	--	--	--	--	--	--	--

PROCESS		MATERIAL		APPROVED BY		CHECKED BY		DRAWN BY	
---	---	---	---	O.C.K	J.Y.H	S.D.W			

GENERAL TOLERANCE											
MACHINING WORKING					DIE CASTING		INJECTION MOLDING			PRESS WORKING	
FINISH	PRECISION	GENERAL	FINISH	PRECISION	GENERAL	FINISH	PRECISION	GENERAL	FINISH	PRECISION	GENERAL
0.5 - 6	±0.05	±0.1	1-10	±0.1	±0.2	1-10	±0.1	±0.2	1-10	±0.1	±0.2
6 - 30	±0.1	±0.2	10-30	±0.1	±0.2	10-30	±0.1	±0.2	10-30	±0.1	±0.2
30 - 120	±0.15	±0.3	30-100	±0.1	±0.2	100-300	±0.1	±0.2	100-300	±0.1	±0.2
120 - 400	±0.2	±0.5	300-1000	±0.1	±0.2	1000-3000	±0.1	±0.2	1000-3000	±0.1	±0.2
400 - 1000	±0.3	±0.8									

PRODUCT GENERAL TOLERANCE						
CASTER HEIGHT	WHEEL OUTER DIAMETER	WHEEL HUB WIDTH	PRECISION	GENERAL	PRECISION	GENERAL
±0.5K (MIN±0.5mm)	±1K (MIN±1mm)	±0.5K (MIN±0.5mm)	±1K (MIN±1mm)	-1K (MIN-0.5mm)	-2K (MIN-1mm)	

FOOT MASTER®		FOOMA®		G-DOK IND.	
SERIES NAME	GF-SERIES	DATE	2023.08.21	GSN NO.	-
PRODUCT NAME	GF-150-BRF-MCD	SCALE	N/S	DWG. NO.	-
PART NAME	ASSEMBLY	WEIGHT	--	REVISION	
		GENERAL TOLERANCE	--	ANGLE	▲

FOOT MASTER G-DOK IND.