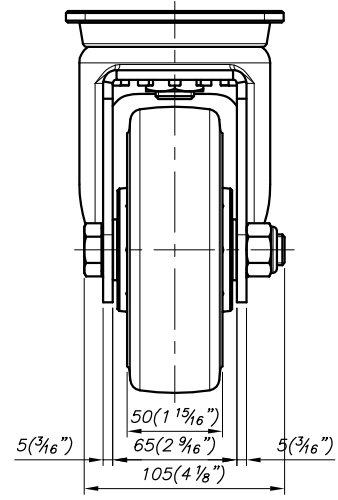
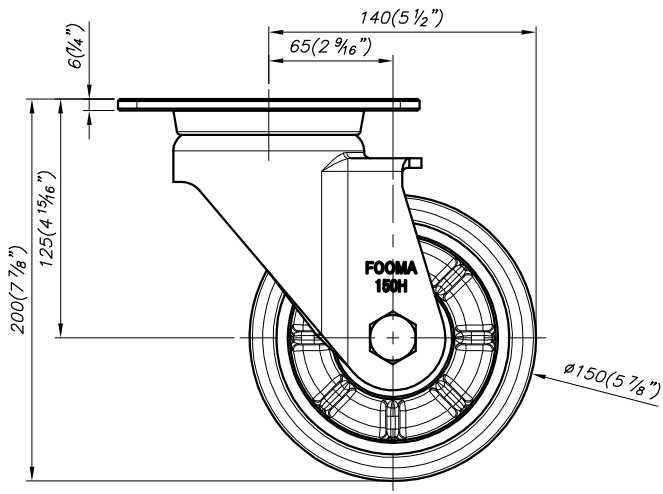
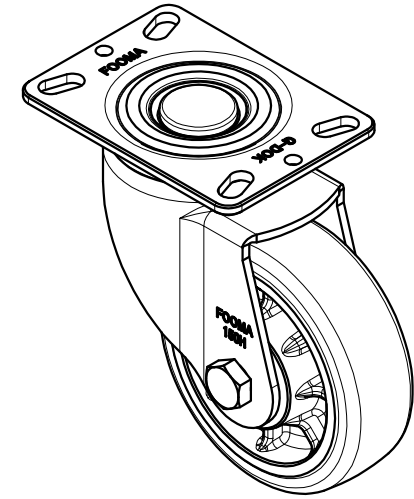
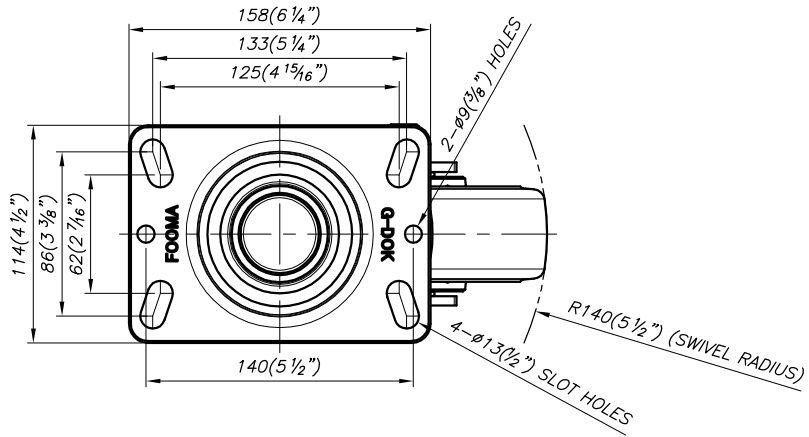


REV. NO.	DATE	DESCRIPTION	APP'D	REMARKS
1	-	-	-	-

0



NOTE
 ⚠1) LOAD CAPACITY : 700KG/EA
 ⚠2) SURFACE TREATMENT : POWDER COATED & ZINC GALVANIZED

PROCESS		GENERAL TOLERANCE															
MATERIAL		MACHINING WORKING				DIE CASTING				ELECTRON BEAM WELDING				PRESS WORKING			
APPROVED BY	CHECKED BY	DRAWN BY	CLASS	PRES	GEN	CLASS	PRES	GEN	CLASS	PRES	GEN	CLASS	PRES	GEN	CLASS	PRES	GEN
O.C.K	J.Y.H	J.T.H	0.5-6	±0.05	±0.1	1-8	±0.05	±0.1	1-8	±0.05	±0.1	1-8	±0.05	±0.1	1-8	±0.05	±0.1
			6-30	±0.1	±0.2	1-8	±0.1	±0.2	1-8	±0.1	±0.2	1-8	±0.1	±0.2	1-8	±0.1	±0.2
			31-120	±0.15	±0.3	1-8	±0.15	±0.3	1-8	±0.15	±0.3	1-8	±0.15	±0.3	1-8	±0.15	±0.3
			121-400	±0.2	±0.5	1-8	±0.2	±0.5	1-8	±0.2	±0.5	1-8	±0.2	±0.5	1-8	±0.2	±0.5
			401-1000	±0.3	±0.8	1-8	±0.3	±0.8	1-8	±0.3	±0.8	1-8	±0.3	±0.8	1-8	±0.3	±0.8

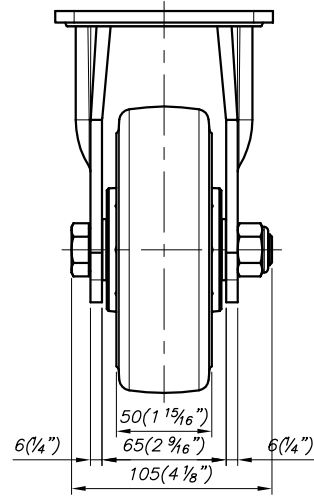
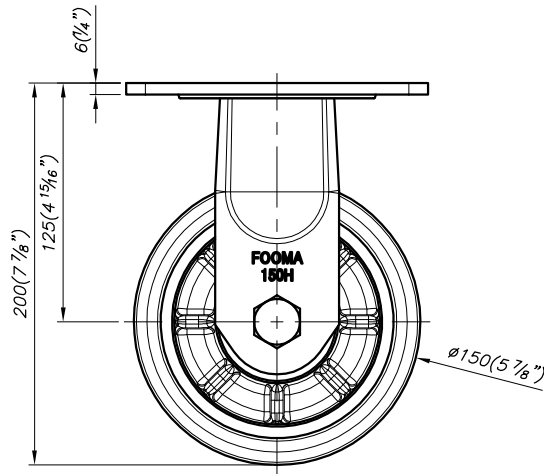
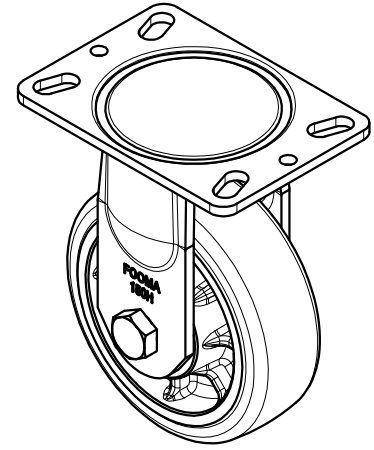
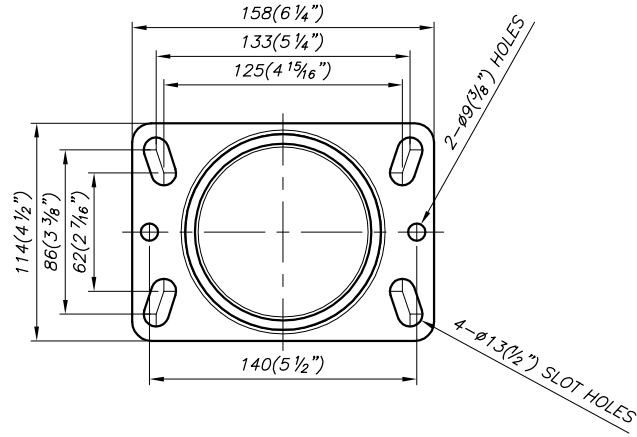
NO.	DESCRIPTION	UNIT	Q'TY	MATERIAL	WEIGHT	SPECIFICATION	REMARKS
--	--	--	--	--	--	--	--

FOOT MASTER®		FOOMA®		G-DOK IND.	
SERIES NAME	GHP-SERIES	DATE	2024.04.26	GSN NO.	5E111-111111
PRODUCT NAME	GHP-150-ASF-MUD	SCALE	1/3	DWG. NO.	5E111-111111
PART NAME	ASSEMBLY	WEIGHT	--	REVISION	SIZE A3
		GENERAL TOLERANCE	B	ANGLE	⚠

FOOT MASTER G-DOK IND. FOOT MASTER G-DOK IND.

REV. NO.	DATE	DESCRIPTION	APP'D	REMARKS
1	-	-	-	-

0



NOTE

- ±1) LOAD CAPACITY : 700KG/EA
- ±2) SURFACE TREATMENT : POWDER COATED & ZINC GALVANIZED

PROCESS		GENERAL TOLERANCE															
MATERIAL		MACHINING WORKING				DE CASTING				ELECTRON BEAM WELDING				PRESS WORKING			
APPROVED BY	CHECKED BY	DRAWN BY	CLASS	PRECISION	GENERAL	CLASS	PRECISION	GENERAL	CLASS	PRECISION	GENERAL	CLASS	PRECISION	GENERAL	CLASS	PRECISION	GENERAL
O.C.K	J.Y.H	J.T.H	0.5-6	±0.05	±0.1	1-8	±0.05	±0.1	1-8	±0.05	±0.1	1-8	±0.05	±0.1	1-8	±0.05	±0.1
			6-30	±0.1	±0.2	1-8	±0.1	±0.2	1-8	±0.1	±0.2	1-8	±0.1	±0.2	1-8	±0.1	±0.2
			30-120	±0.15	±0.3	1-8	±0.15	±0.3	1-8	±0.15	±0.3	1-8	±0.15	±0.3	1-8	±0.15	±0.3
			120-400	±0.2	±0.5	1-8	±0.2	±0.5	1-8	±0.2	±0.5	1-8	±0.2	±0.5	1-8	±0.2	±0.5
			400-1000	±0.3	±0.8	1-8	±0.3	±0.8	1-8	±0.3	±0.8	1-8	±0.3	±0.8	1-8	±0.3	±0.8

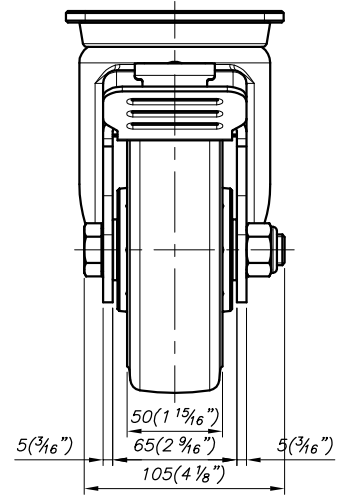
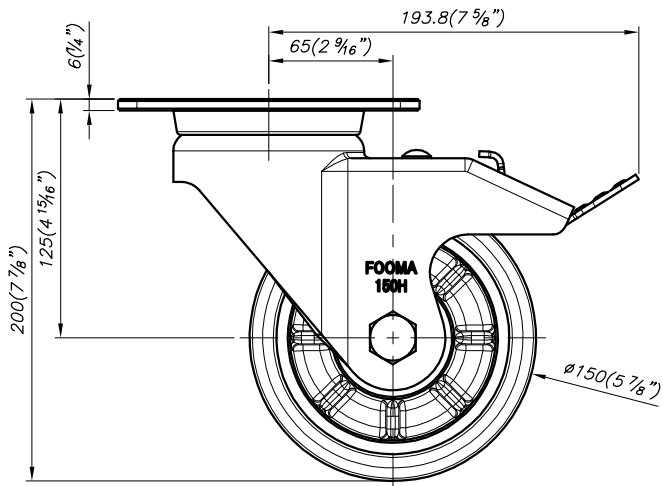
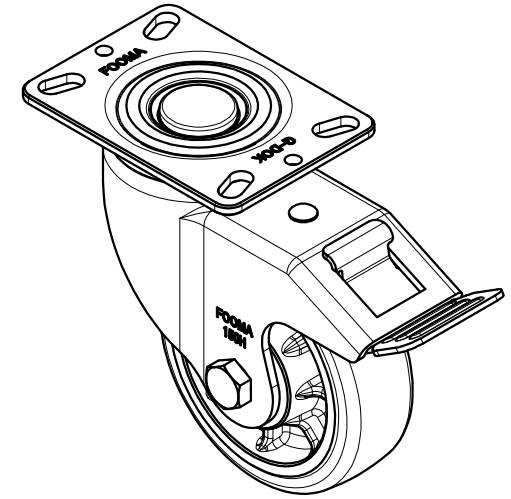
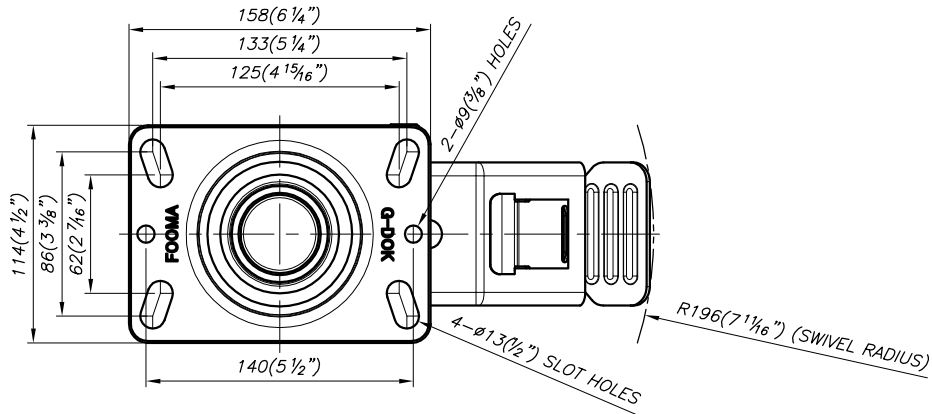
NO.		DESCRIPTION	UNIT	Q'TY	MATERIAL	WEIGHT	SPECIFICATION	REMARKS	
---		---							---

FOOT MASTER®		FOOMA®		G-DOK IND.	
SERIES NAME	GHP-SERIES	DATE	2024.04.26	GSN NO.	5E121-111111
PRODUCT NAME	GHP-150-ARF-MUD	SCALE	1/3	DWG. NO.	5E121-111111
PART NAME	ASSEMBLY	WEIGHT	---	REVISION	SIZE A3
		GENERAL TOLERANCE	B	ANGLE	⊕ ⊖

FOOT MASTER G-DOK IND. FOOT MASTER G-DOK IND.

REV. NO.	DATE	DESCRIPTION	APP'D	REMARKS
△	-	-	-	-

0



NOTE
 ⌘1) LOAD CAPACITY : 700KG/EA
 ⌘2) SURFACE TREATMENT : POWDER COATED & ZINC GALVANIZED

PROCESS		GENERAL TOLERANCE																						
MATERIAL		MACHINING WORKING					DE CASTING					ELECTRON BEAM WELDING					PRESS WORKING							
APPROVED BY	CHECKED BY	DRAWN BY	PRODUCT GENERAL TOLERANCE																					
CUSTOMER HEIGHT	WHEEL OUTER DIAMETER	WHEEL HUB WIDTH																						
O.C.K	J.Y.H	J.T.H	0.5 - 6	±0.05	±0.1	±0.2	±0.3	±0.4	±0.5	±0.6	±0.7	±0.8	±0.9	±1.0	±1.2	±1.5	±2.0	±2.5	±3.0	±4.0	±5.0	±6.0	±8.0	±10.0

NO.	DESCRIPTION	UNIT	Q'TY	MATERIAL	WEIGHT	SPECIFICATION	REMARKS
--	--	-	-	-	-	-	-

FOOT MASTER®		FOOMA®		G-DOK IND.	
SERIES NAME	GHP-SERIES	DATE	2024.04.26	GSN NO.	5E131-111111
PRODUCT NAME	GHP-150-BSF-MUD	SCALE	1/3	DWG. NO.	5E131-111111
PART NAME	ASSEMBLY	WEIGHT	--	REVISION	SIZE A3
		GENERAL TOLERANCE	B	ANGLE	△

FOOT MASTER G-DOK IND. FOOT MASTER G-DOK IND.